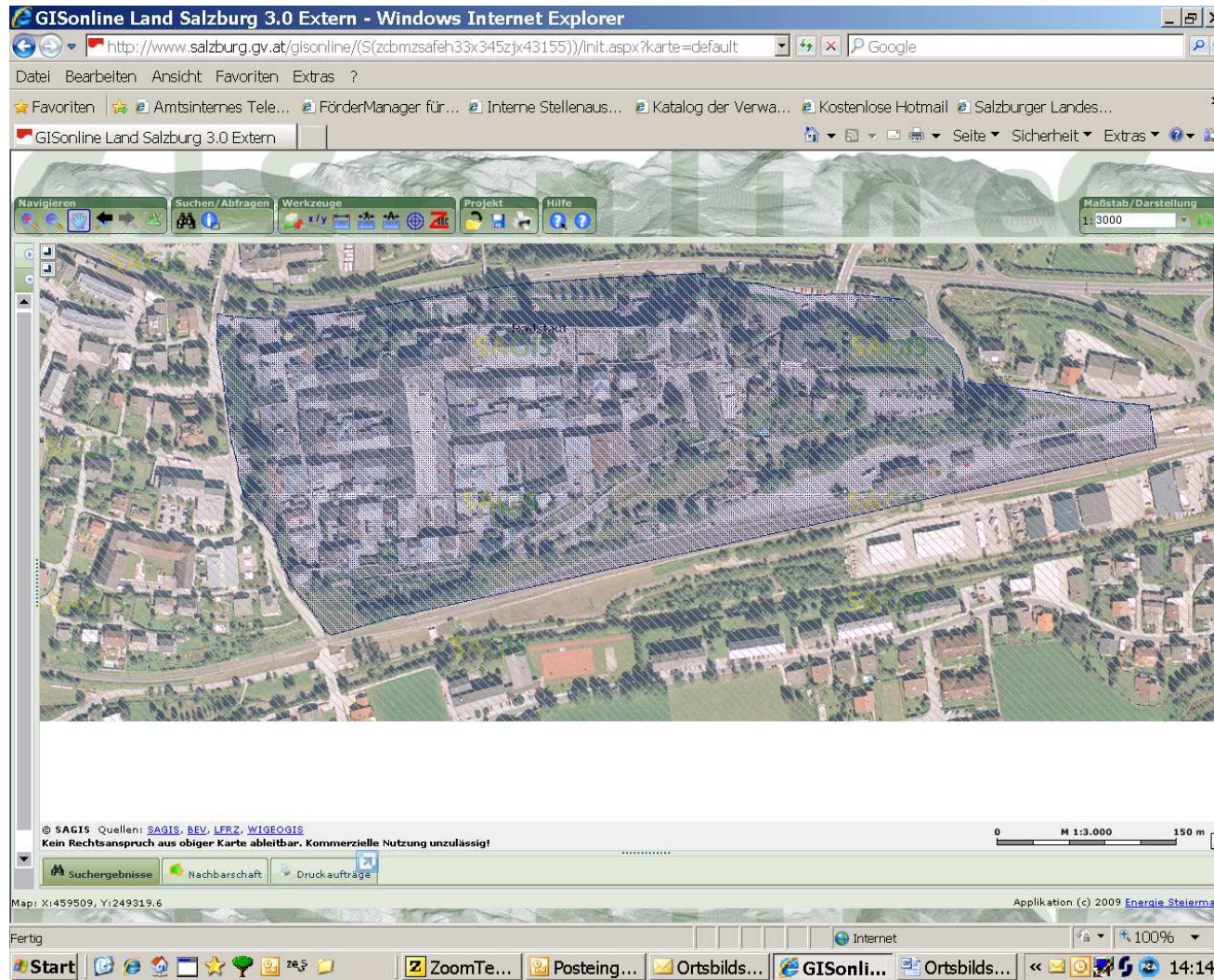
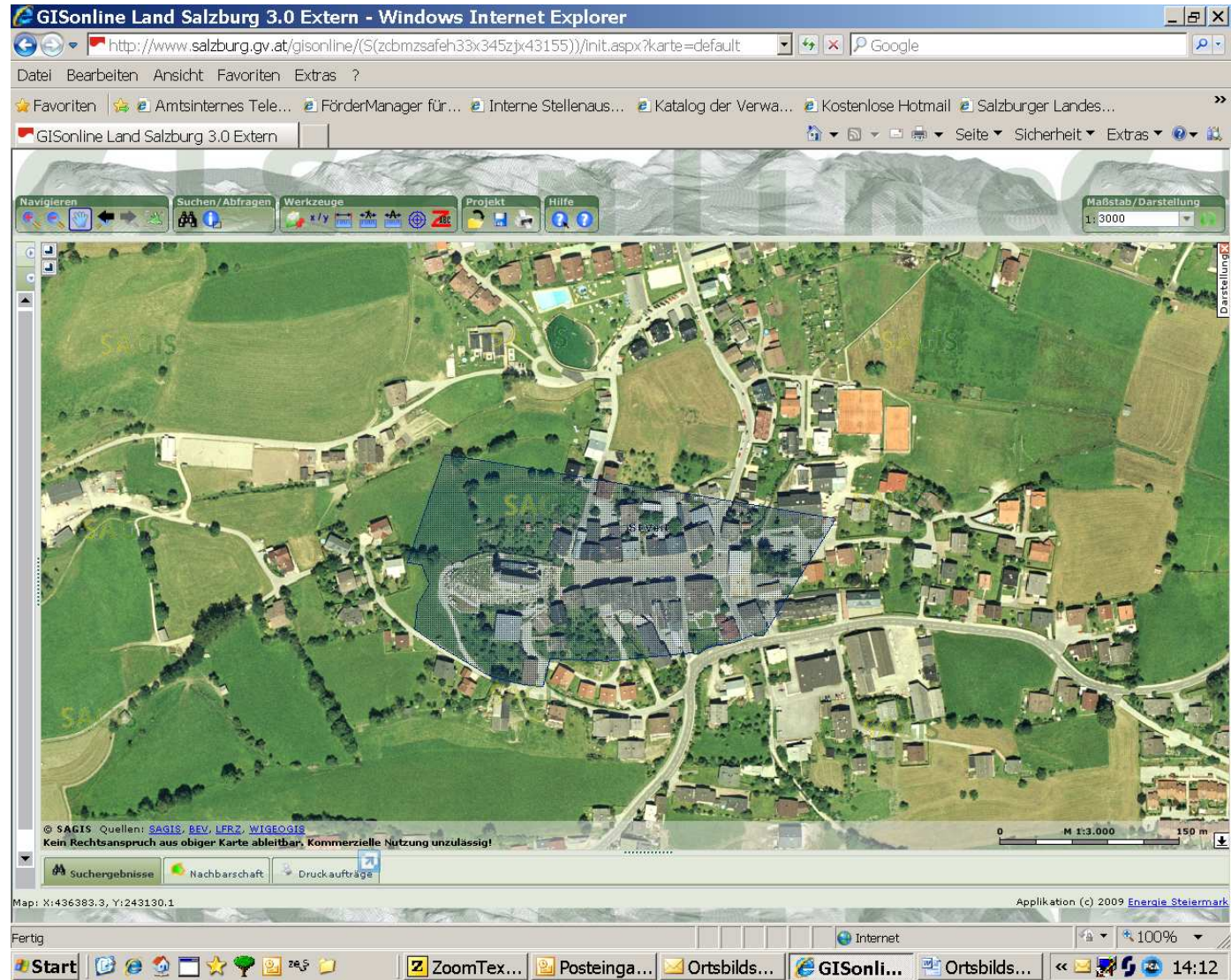


Ortsbildschutzgebiete:

Radstadt: StF: LGB1 Nr 19/1976



St. Veit: StF: LGB1 Nr 97/1976



Mauterndorf: StF: LGB1 Nr 8/1977

The screenshot shows a web browser window titled "GISonline Land Salzburg 3.0 Extern - Windows Internet Explorer". The address bar contains the URL: [http://www.salzburg.gv.at/gisonline/\(S\(zcbmzsafeh33x345zjx43155\)\)/init.aspx?karte=default](http://www.salzburg.gv.at/gisonline/(S(zcbmzsafeh33x345zjx43155))/init.aspx?karte=default). The browser's address bar also shows a Google search icon.

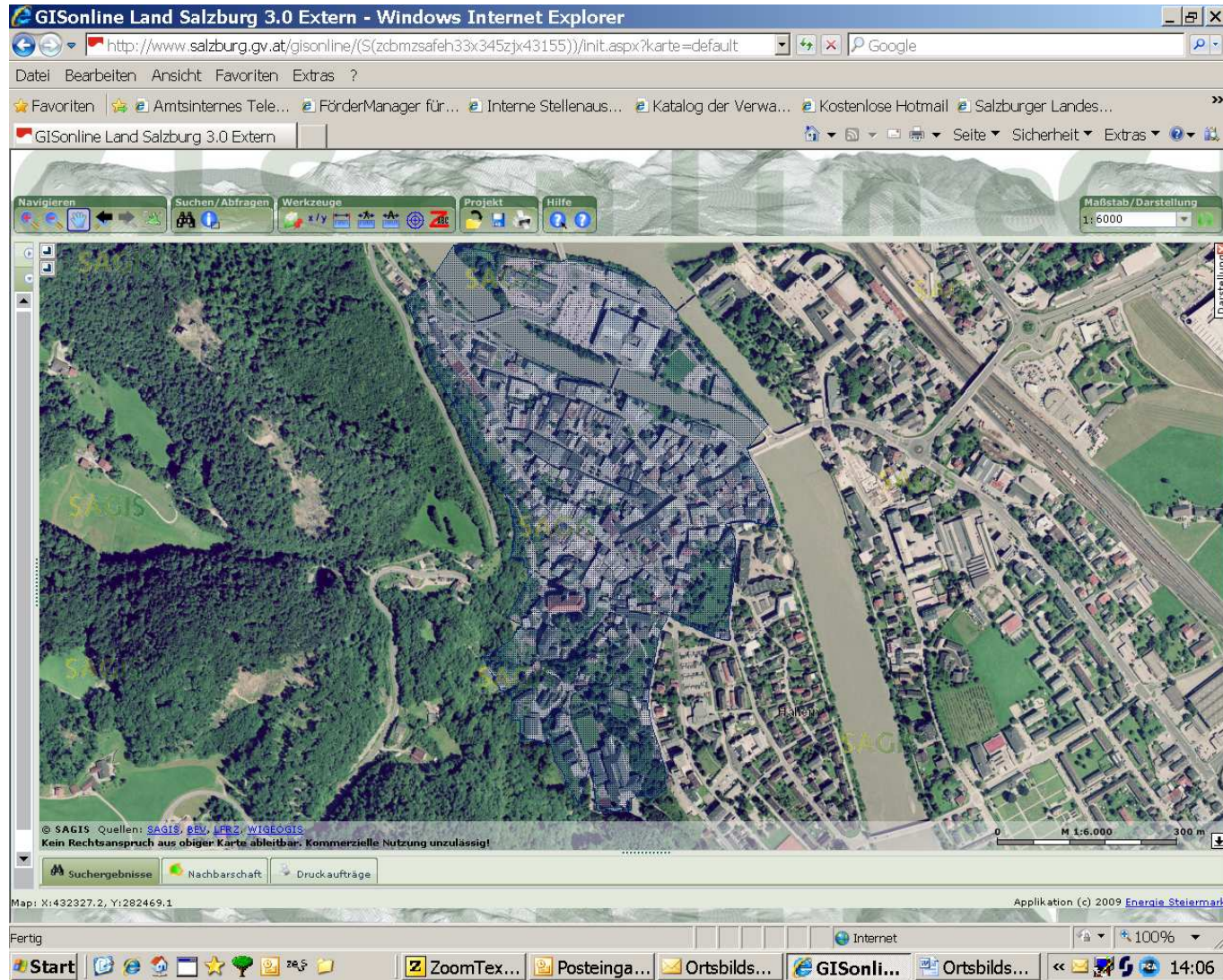
The application interface includes a menu bar with "Datei", "Bearbeiten", "Ansicht", "Favoriten", and "Extras". Below the menu bar is a "Favoriten" section with several icons and labels, including "Amtsinternes Tele...", "FörderManager für...", "Interne Stellenaus...", "Katalog der Verwa...", "Kostenlose Hotmail", and "Salzburger Landes...".

The main content area features a toolbar with "Navigieren", "Suchen/Abfragen", "Werkzeuge", "Projekt", and "Hilfe" buttons. A "Maßstab/Darstellung" dropdown menu is set to "1:4500". The map itself is an aerial view of a rural area with a blue shaded polygon highlighting a specific region labeled "Mauterndorf". The map includes a scale bar at the bottom right showing "0", "M 1:4.500", and "200 m".

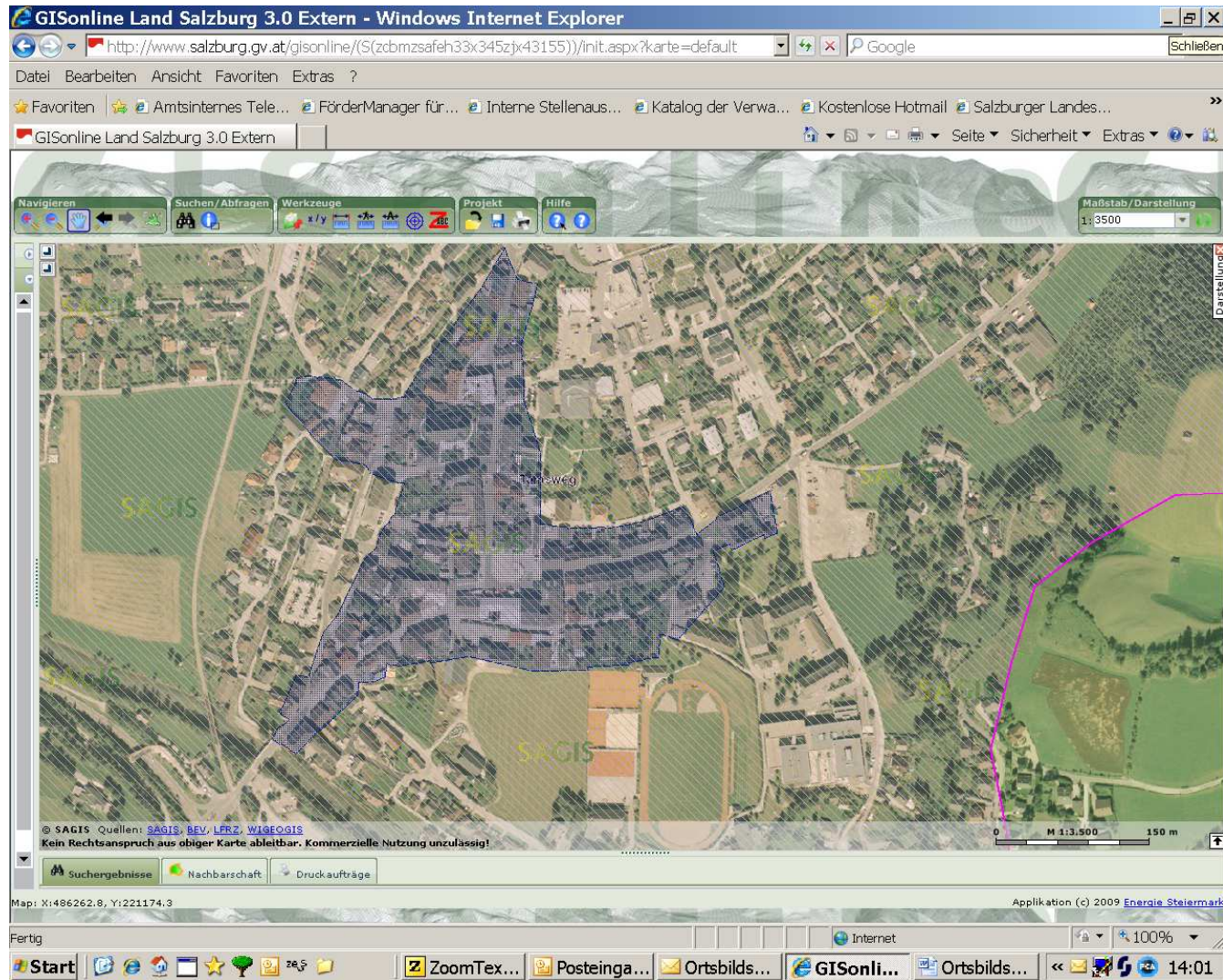
At the bottom of the map area, there is a copyright notice: "© SAGIS Quellen: SAGIS, BEV, LFRZ, WIGEOGIS" and a disclaimer: "Kein Rechtsanspruch aus obiger Karte ableitbar. Kommerzielle Nutzung unzulässig!". Below this, there are buttons for "Suchergebnisse", "Nachbarschaft", and "Druckaufträge".

The status bar at the bottom of the browser window shows "Fertig", "Internet", and "100%". The Windows taskbar at the very bottom displays the "Start" button, several application icons, and the system clock showing "14:09".

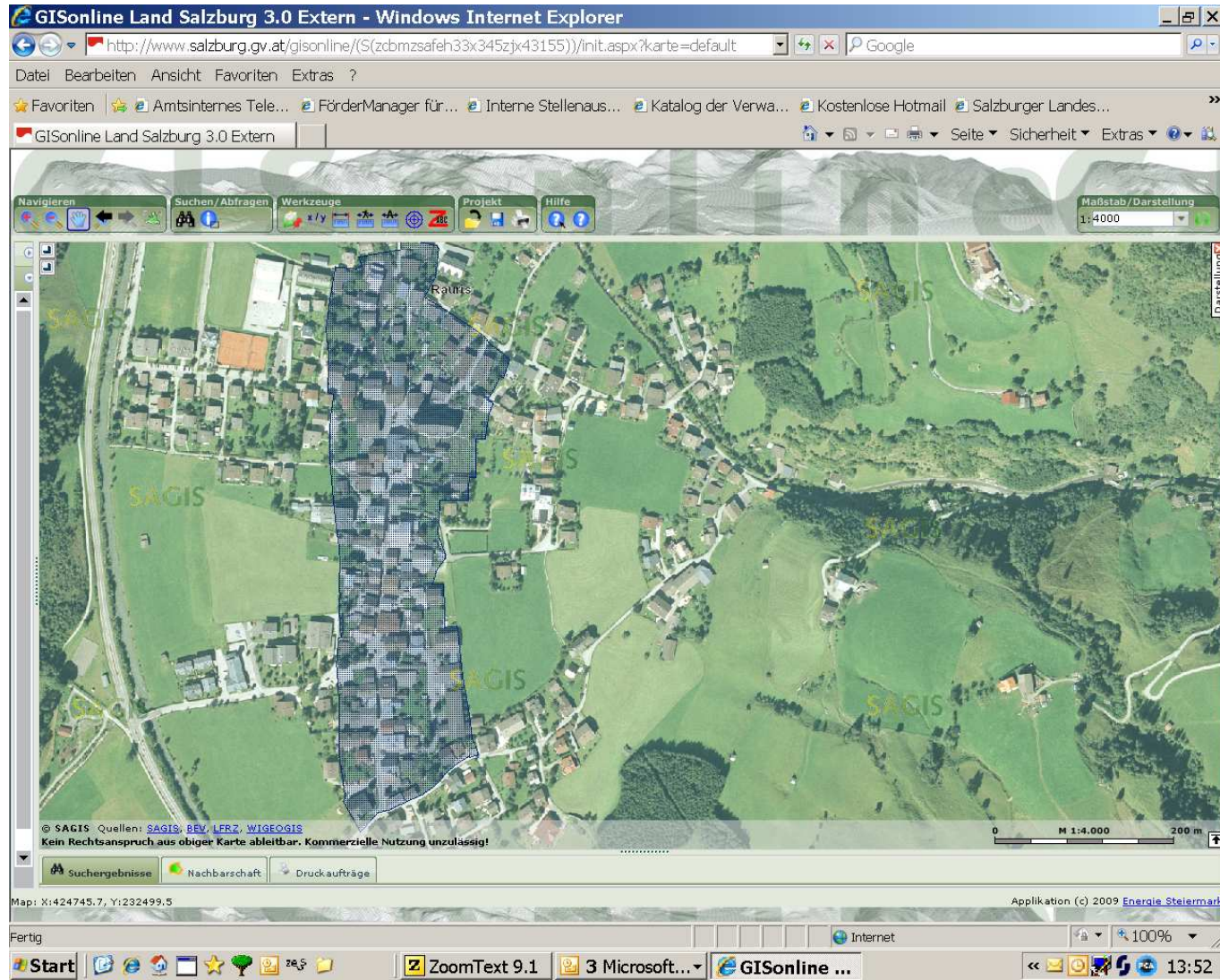
Hallein: StF: LGB1 Nr 56/1978; idF: LGB1 Nr 76/2005



Tamsweg: StF: LGB1 Nr 70/1980



Rauris: StF: LGB1 Nr 35/1983



Goldegg: StF: LGB1 Nr 33/1986

The screenshot shows a web browser window titled "GISonline Land Salzburg 3.0 Extern - Windows Internet Explorer". The address bar contains the URL: [http://www.salzburg.gv.at/gisonline/\(S\(zcbmzsafeh33x345zjx43155\)\)/init.aspx?karte=default](http://www.salzburg.gv.at/gisonline/(S(zcbmzsafeh33x345zjx43155))/init.aspx?karte=default). The browser's menu bar includes "Datei", "Bearbeiten", "Ansicht", "Favoriten", and "Extras". The address bar also shows "Google" as the search engine.

The main content area displays a GIS application interface. At the top, there is a toolbar with icons for "Navigieren", "Suchen/Abfragen", "Werkzeuge", "Projekt", and "Hilfe". A scale indicator on the right shows "Maßstab / Darstellung" set to "1:3500". The central map area shows an aerial view of a rural area with a blue hatched polygon overlaid on a cluster of buildings labeled "Goldegg". The map is overlaid with a grid and the text "SAGIS" is visible in several locations. A scale bar at the bottom right of the map indicates "0 M 1:3.500 150 m".

At the bottom of the map area, there is a copyright notice: "© SAGIS Quellen: SAGIS, BEV, LFR2, WIGEOGIS. Kein Rechtsanspruch aus obiger Karte ableitbar, Kommerzielle Nutzung unzulässig!". Below this, there are buttons for "Suchergebnisse", "Nachbarschaft", and "Druckaufträge".

The status bar at the bottom of the browser window shows "Fertig" on the left, "Internet" in the center, and "100%" on the right. The Windows taskbar at the very bottom shows the "Start" button and several open applications: "ZoomTe...", "Posteing...", "Ortsbilds...", "GISonli...", and "Ortsbilds...". The system clock shows "13:56".